



# Life Beyond Wellington

---



## The Life Beyond Wellington programme

An integrated careers and life skills programme providing support, advice and guidance to Wellingtonians from Third Form, to university, to first jobs and beyond.



The Life Beyond Wellington (LBW) programme aims to not only support students whilst at College, but also to facilitate young OWs with a seamless transition to university, initial employment and beyond.

This professional networking and careers programme has been in existence since 2017 and the activity was re-branded as the Life Beyond Wellington programme in 2020. The LBW programme is delivered by the Community Team, working in a fully integrated way with the Futures Team, who are responsible for delivering a significant amount of the pupil-facing careers and university programmes. Both teams have been working closely since 2017.

The annual structured Life Beyond Wellington programme includes professional networking events, career specific talks and life skills sessions, that are designed to equip students with the essential skills and insights and prepare them for life beyond their time at Wellington.

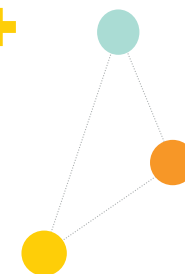
### Welly Connect Global

Our very own version of LinkedIn, Welly Connect Global, is an online professional networking site. The platform facilitates communication among Sixth Form students, OWs and parents, enabling them to seek advice, explore work experience and internships, and establish professional connections. Welly Connect Global currently has a community of over 6,000 parents and OWs, representing a diverse spectrum of experience and knowledge, most of whom are ready to offer guidance and advice to our students and young OWs.

[wellingtonconnectglobal.com](https://wellingtonconnectglobal.com)

# 6,000+

parents and OWs within our community on Welly Connect Global – all ready to offer advice and guidance



**In essence, Life Beyond Wellington serves as a practical and invaluable resource for students and young OWs, ensuring they are well prepared for the challenges and opportunities that await them beyond the College environment.**

## The Life Beyond Wellington teacher-led programme for students

The Futures and Community Teams work together to ensure that all students have the opportunity to develop ideas and skills which will equip them for life after Wellington.



Middle Years:  
– 10X Challenge  
– Morrisby personal skills audit  
– Informal tutorial sessions



### The Futures Team

The Futures Team, led by Dr Emma Ramsey, provides guidance on preparing for post-school life: university applications, degree apprenticeships, gap years and careers. Working closely with the Community Team, they run events for all year groups to help identify and develop skills and interests which give them an insight into where these might lead them in the future.

### Careers Education Middle Years

Formal careers education starts in the Third Form, with both a timetabled programme of activities available for all years as well as an array of informal sessions which students can choose to attend. In the Third and Fourth Form students take part in 10X Challenge, an inter-House entrepreneurship competition. In the Fourth Form students undergo a personal skills audit using the Morrisby online and accredited platform which acts as a useful initial assessment for young people when deciding on a career or higher education path.



### Fifth and Sixth Form

Once they reach the Fifth Form and Lower Sixth, individual pupils are encouraged to think more specifically about what they may do after Wellington and university, with an array of lectures, university visits and networking events available for them to attend.

Sixth Formers also have the opportunity to take Centigrade, an interest based questionnaire administered by Cambridge Occupational Analysts which matches pupils' interests and abilities with Higher Education courses and institutions. In the Lower Sixth, pupils undergo a full UCAS induction programme and can attend the annual University Fair held on campus. The Futures Team also prepare students



for the possibility of further education in the US, with specialist US university advisers spending one day per week at the College, giving those who are thinking about applying to US institutions a regular opportunity to discuss any aspect of the process, from SAT and ACT preparation to scholarships which might be available. There is an annual US university trip in the Michaelmas half-term.

### Upper Years & Sixth Form:

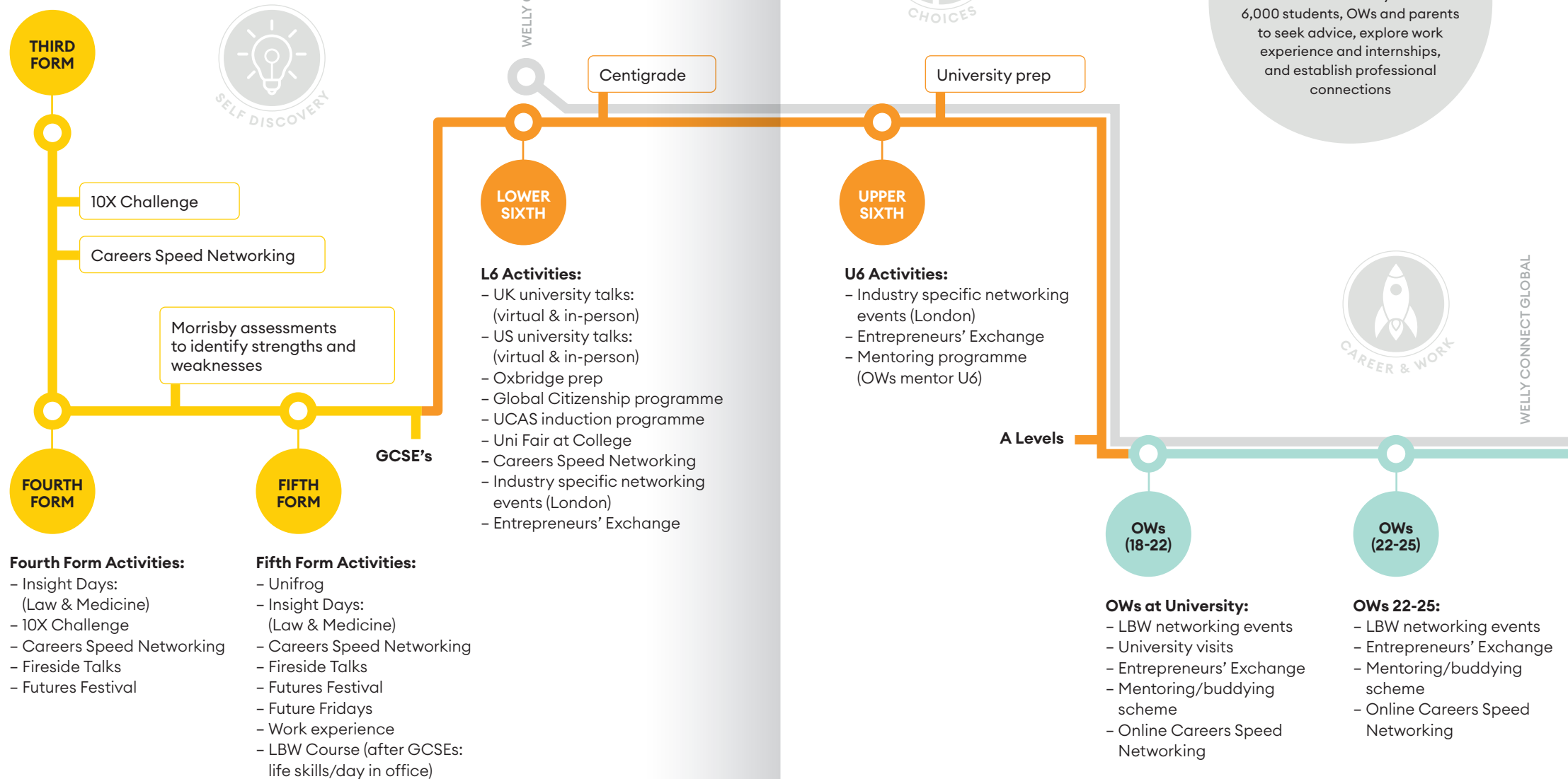
- Centigrade questionnaire
- UCAS induction programme
- University Fair
- US university advice
- Networking events
- Lectures & university visits



**The LBW programme prepares students to be world-ready for when they leave College, but also provides a lifetime of support as they become OWs.**

# The LBW Pathway

Support and advice for Wellingtonians and OWs



**Fourth Form Activities:**

- Insight Days: (Law & Medicine)
- 10X Challenge
- Careers Speed Networking
- Fireside Talks
- Futures Festival

**Fifth Form Activities:**

- Unifrog
- Insight Days: (Law & Medicine)
- Careers Speed Networking
- Fireside Talks
- Futures Festival
- Future Fridays
- Work experience
- LBW Course (after GCSEs: life skills/day in office)

**L6 Activities:**

- UK university talks: (virtual & in-person)
- US university talks: (virtual & in-person)
- Oxbridge prep
- Global Citizenship programme
- UCAS induction programme
- Uni Fair at College
- Careers Speed Networking
- Industry specific networking events (London)
- Entrepreneurs' Exchange

**U6 Activities:**

- Industry specific networking events (London)
- Entrepreneurs' Exchange
- Mentoring programme (OWs mentor U6)

**OWs at University:**

- LBW networking events
- University visits
- Entrepreneurs' Exchange
- Mentoring/buddying scheme
- Online Careers Speed Networking

**OWs 22-25:**

- LBW networking events
- Entrepreneurs' Exchange
- Mentoring/buddying scheme
- Online Careers Speed Networking

**WELLY CONNECT GLOBAL**

Join our community of over 6,000 students, OWs and parents to seek advice, explore work experience and internships, and establish professional connections



Careers Speed Networking

## The Life Beyond Wellington annual events programme

### Careers Speed Networking

The Careers Speed Networking event stands out as one of our most widely attended events with all students encouraged to attend. The event (run twice a year) is facilitated by a team of around 40 parent and OW volunteers, each possessing a diverse range of skills and experiences from across various professions. The primary aim is to provide students with a platform to delve into potential career paths, gain practical insights for their next steps, and refine the crucial skill of networking.

The structure of the event involves segmented time slots, during which students are actively encouraged to engage with as many volunteers as possible. To help those students who may be apprehensive, we provide them with a few question suggestions to help them get started.



Recent Fireside Talks include influential speakers such as Ros Atkins, BBC News Analysis Editor and author, Aaron Bastani, Founder of Novara Media, journalist and writer, and Soma Sara, activist and author

### Fireside Talks

Wellington College is renowned as a crucible of educational debate and intellectual discovery, and this is, in no small part, due to the outstanding speakers who step through our gates on a weekly basis to offer talks, lectures and seminars on a wide range of topics to our pupils and, often, our parents too.

All Wellingtonians have the opportunity to hear leading voices and thought-leaders from the world of science, politics, business and education through our Fireside Talks series, to which pupils and other members of the Wellington Community are welcome.



### Futures Festival and Futures Friday

The Futures Team organise a series of Friday workshops for students covering a diverse list of topics which they are encouraged to attend as well as an annual Futures Festival. This is a week when students have the opportunity to attend a wide range of enlightening talks delivered by parents and OWs from a range of fields as well as taking part in debates on some of the most current and important issues facing the world today. Alongside these are various activities, with students using these experiences to help them make informed decisions about their future, whether related to GCSE choices, Sixth Form selections, or career and study paths.

### Global Citizenship

Character development is an essential part of the education we provide. The Global Citizenship programme helps pupils to understand their role in the world, to aid their transition to empowered, engaged social change-makers who will have a positive impact in society.

Global Citizenship Education aims to build a respect for all, to empower pupils to become proactive contributors to society, developing core competencies to ensure that they are able to actively engage with the world and so make positive social change.



### Entrepreneurs' Exchange

The Entrepreneurs' Exchange is an event which fosters cross-generational ideas exchange, with active participation from OWs, parents, and students interested in business and entrepreneurship. Entrepreneurs and investors alike share insights, advice and potential collaborative opportunities, enriching networking possibilities with a range of perspectives.

During the event, attendees have the opportunity to hear concise two-minute pitches from selected OWs, students and parents. Following these presentations, a relaxed networking session creates an environment where connections can flourish.

### Professional Networking Events

Our bespoke Professional Networking events are essential components of the Life Beyond Wellington programme, fostering connections and support across various industries such as finance, property, law, engineering, and more. These formal yet relaxed gatherings in London are especially valued by Sixth Form students and young OWs, offering invaluable networking opportunities.

## A New Sixth Form Centre

The new Sixth Form Centre is scheduled to open in 2024 and will be a space in which the Futures and Community Teams come together to deliver the Life Beyond Wellington programme and also give Sixth Formers a place to meet, relax and work.



Architect's impression

The three-storey building with cafeteria and social space on the ground floor, spilling out onto a new courtyard; on the first floor, pods for small group study and individual work space for up to 100 will give our Sixth Form somewhere to study beyond the library and their rooms; the first and second floors will bring together our Careers, Universities and Higher Education Departments, as well as office and meeting space for our Sixth Form and IB teams.



For more information about any aspect of the Life Beyond Wellington programme, please contact the Community Team: [community@wellingtoncollege.org.uk](mailto:community@wellingtoncollege.org.uk)

Join Welly Connect Global: [wellingtonconnectglobal.com](http://wellingtonconnectglobal.com)





Community Office  
Wellington College  
Crowthorne  
Berkshire  
RG45 7PU

[community@wellingtoncollege.org.uk](mailto:community@wellingtoncollege.org.uk)  
+44 (0)1344 444023

**[wellingtoncollege.org.uk](http://wellingtoncollege.org.uk)**  
**[wellycom.net](http://wellycom.net)**  
**[wellingtonconnectglobal.co.uk](http://wellingtonconnectglobal.co.uk)**

Registered Charity 309093